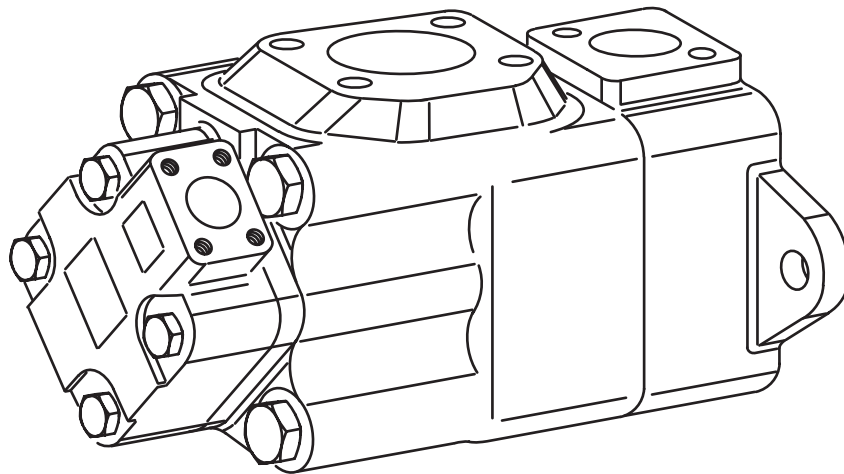


Vickers®
Hydraulic Vane Pump



Parts and Repair
Information



Quiet Intra -Vane Double Pump
3525V*****-***-20(L)-28*

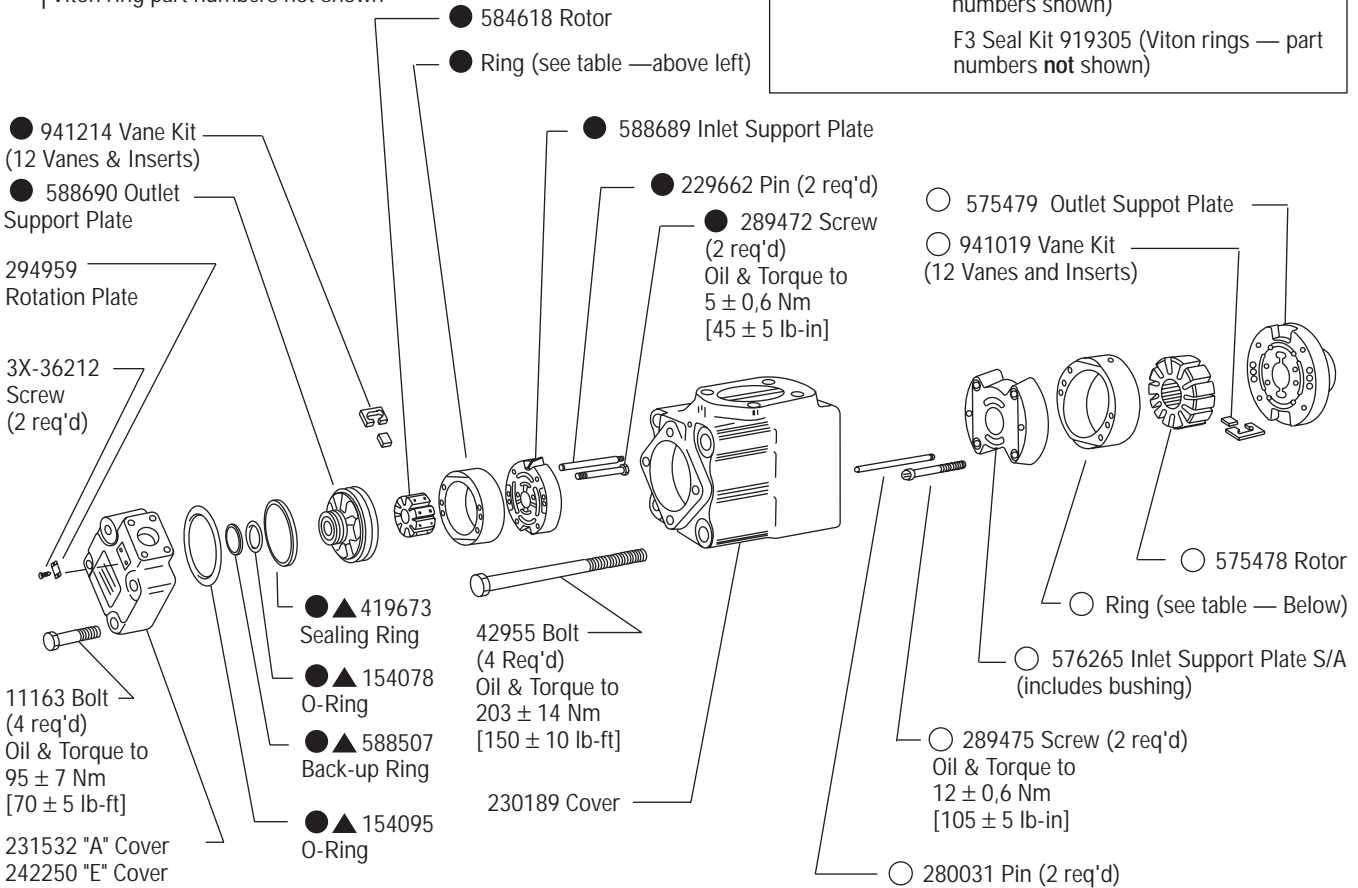
Quiet Intra-Vane Double Pump

Note: Seals must be completely wetted at time of assembly with an SAE 10W motor oil of "SE" quality or an industrial hydraulic oil equivalent. Assemble seal with lip toward the bearing.

Capacity Cover End Pump (USGPM)	● Ring	Cartridge Kit (Includes Buna-N ... rings)	F3 Cartridge Kit (Includes Viton ... rings) †
3525V***12	584610	591091	591109
3525V***14	584612	591092	591110
3525V***17	584614	591093	591111
3525V***21	584616	591094	591112

†Viton ring part numbers not shown

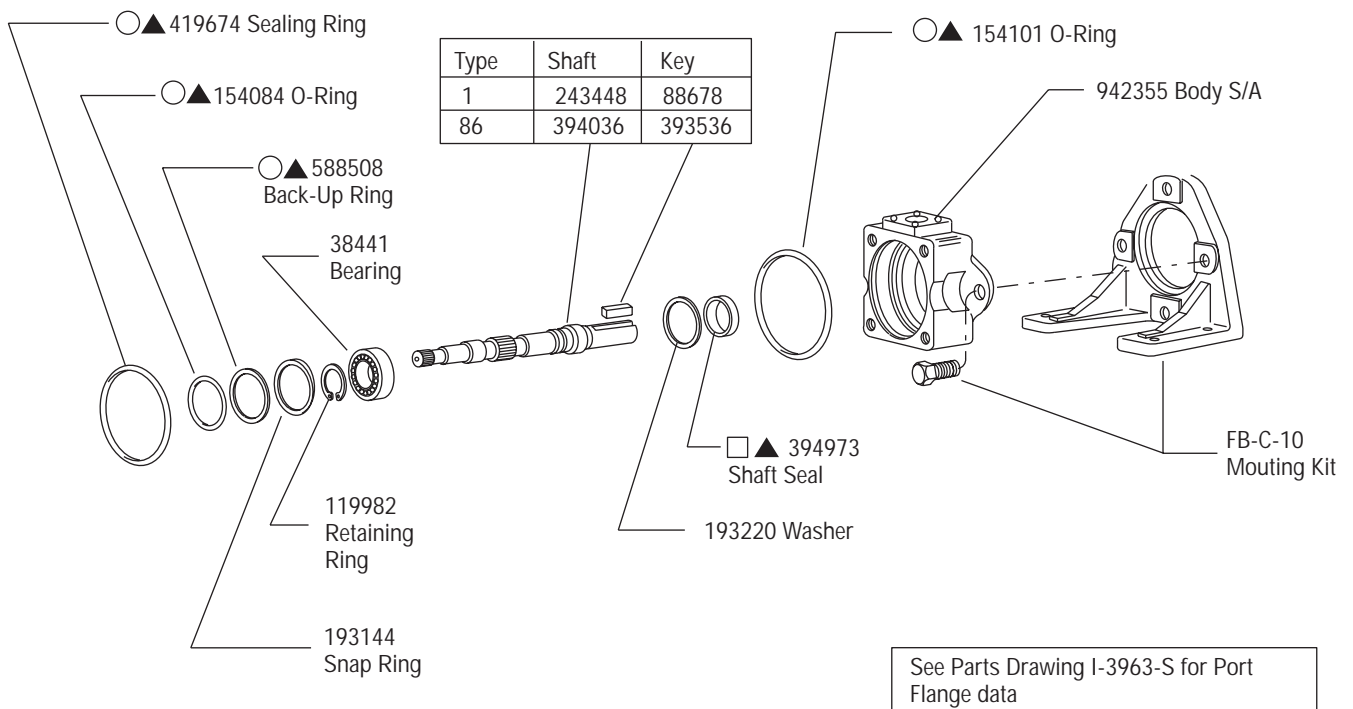
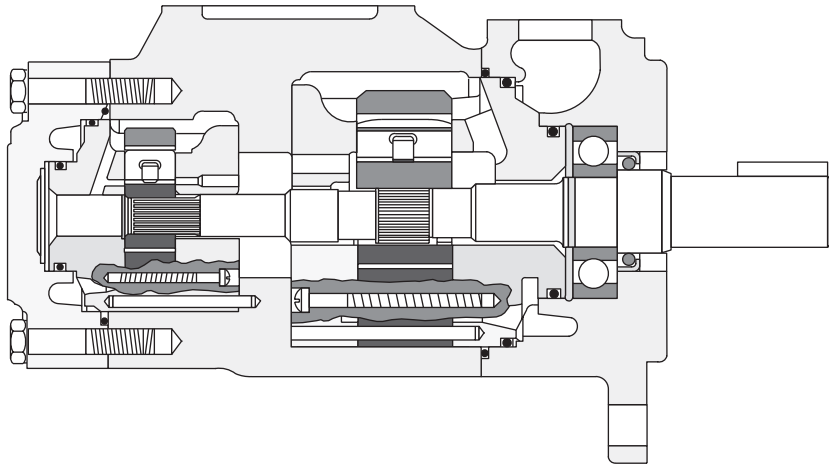
○ Included in shaft end cartridge kit
 ● Included in cover end cartridge kit
 ▲ Included in: Seal Kit 922862 (Buna-N rings — part numbers shown)
 F3 Seal Kit 919305 (Viton rings — part numbers **not** shown)



Capacity Shaft End Pump (USGPM)	○ Ring	Cartridge Kit (Includes Buna-N rings)	F3 Cartridge Kit (Includes Viton rings) †
3525V25	576210	578311	584306
3525V30	576212	578312	584307
3525V35	576214	578313	584308
3525V38	575476	578314	584309

†Viton ring part numbers not shown

Quiet Intra-Vane Double Pump

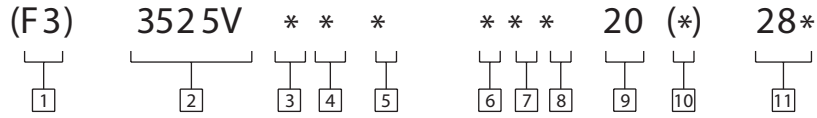


See Parts Drawing I-3963-S for Port Flange data

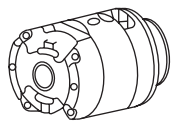
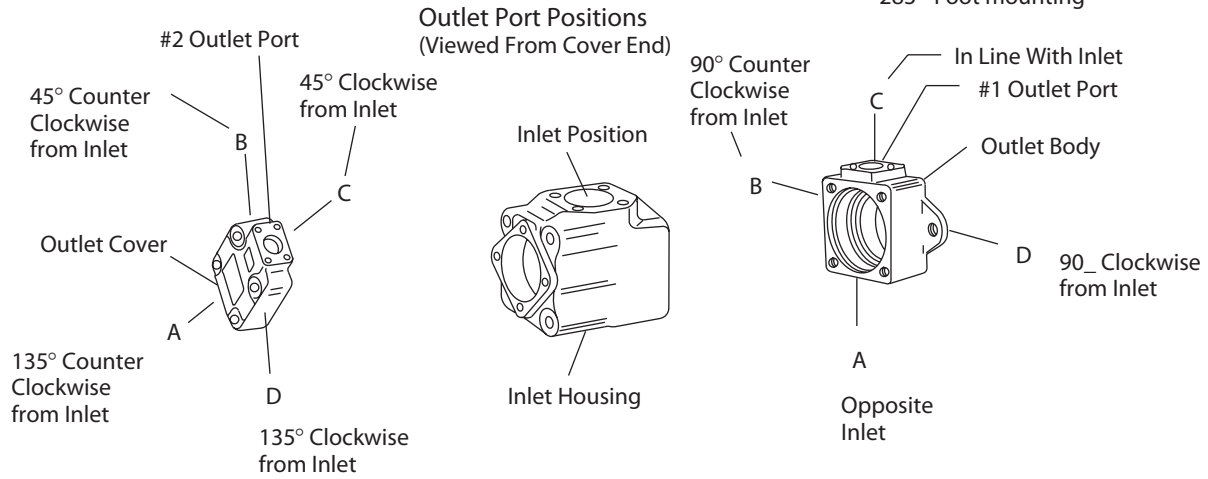
CAUTION

Individual cartridge parts are not interchangeable with similar parts of the previous design. Complete cartridges are interchangeable with the previous design.

Quiet Intra-Vane Double Pump



<p>1 Seal Material F3 - Viton® <i>Viton is a registered trademark of E.I. DuPont</i> Omitted - buna-N</p>	<p>4 Port Connections A - SAE 4-bolt flange E - SAE Std. thread at #2 outlet port</p>	<p>7 #1 Outlet Port Position</p>
<p>2 Model Series 3525V - Vane Pump</p>	<p>5 Capacity - Cover end pump (Rating at 1200 RPM - 100 PSI) (see inside for capacities.)</p>	<p>8 #2 Outlet Port Position</p>
<p>3 Capacity - Shaft end pump (Rating at 1200 RPM - 100 PSI) (See inside for capacities.)</p>	<p>6 Shaft Type 1 - Straight with square key (standard) 86 - Straight with square key (heavy duty)</p>	<p>9 Design</p> <p>10 Rotation (Viewed from shaft end) L - Left hand (CCW rotation) Omitted - Right hand rotation</p>
		<p>11 Mounting 282 - SAE 2-bolt mounting 283 - Foot mounting</p>



Parts Ordering

Parts are the same for both right and left hand rotation. When ordering spare cartridge parts, it is recommended they be obtained in cartridge kits. Kits are assembled and tested for either right or left hand rotation. If left hand rotation is required, it should be specified on parts order by adding suffix "L" to Kit Number. For example, 591091-L.

For satisfactory service life of these components in industrial applications, use full flow filtration to provide fluid which meets ISO cleanliness code 20/18/15 or cleaner. Selections from Vickers OFF, OFR, and OFRS series are recommended.

Information contained in this catalog is accurate as of the publication date and is subject to change without notice. Performance values are typical values. Customers are responsible for selecting products for their applications using normal engineering methods.

Eaton
Fluid Power Group
Hydraulics Group USA
14615 Lone Oak Road
Eden Prairie, MN 55344
USA
Tel: 952-937-9800
Fax: 952-294-7722
www.eaton.com/hydraulics

Eaton
Fluid Power Group
Hydraulics Group Europe
Route de la Longeraie 7
1110 Morges
Switzerland
Tel: +41 (0) 21 811 4600
Fax: +41 (0) 21 811 4601

Eaton
Fluid Power Group
Hydraulics Group Asia Pacific
11th Floor Hong Kong New World Tower
300 Huaihai Zhong Road
Shanghai 200021
China
Tel: 86-21-6387-9988
Fax: 86-21-6335-3912