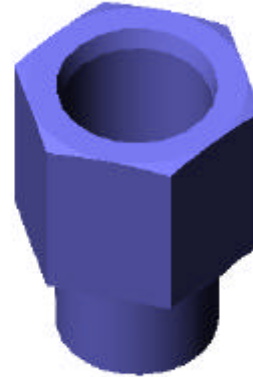
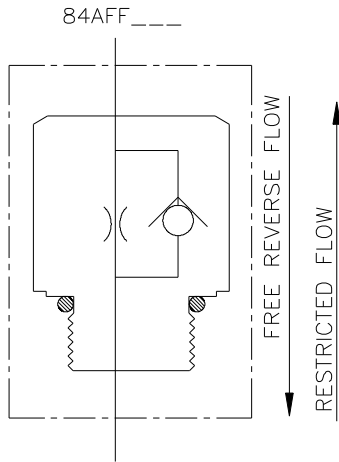


## NON – ADJUSTABLE FIXED ORIFICE

### “SERIES 84”



84AFF.063

### FEATURES:

- **RESTRICTED FLOW** allows flow to be metered through a specified orifice.
- **FREE REVERSE FLOW** allows fluid to move freely.

### SPECIFICATIONS:

- Orifice DIA. 0 – 0.250” (0 – 0.635 cm).
- Rated for 3000 psi (207 bar).
- Weighs 1/4 lb. (0.11 kg).
- 30-Micron Filtration Recommended.
- Port size #8 SAE (3/4-16).

### MATERIALS:

- **Black Oxide Steel Body.**
- **Buna N O’Rings (Standard).**

### SERIES 84 – GENERAL INFORMATION:

The Brand, Series 84 is a two port, non-adjustable, inline, fixed orifice with free reverse flow. The flow is determined by the orifice diameter and fluid pressure. The orifice diameter must be specified by the customer when ordering (up to a diameter of 0.250”). The orifice plate is held in place when it is connected to a #8 SAE male fitting. This restricted flow assembly is inexpensive and gives the customer the ability to change the orifice diameter by swapping the orifice plate with another that has a different size orifice

### SERIES 84 – EXAMPLES OF COMMON MODEL CODES:

- 84AFF.125**..... #8 SAE ports and an orifice diameter of 0.125.  
**84AFF.063**..... #8 SAE ports and an orifice diameter of 0.063.  
**84AFF\_**.....#8 SAE ports, indicate orifice diameter, as per example: 84AFF.063 = .063 orifice.

### DIMENSIONAL DATA:

